

Woolery

MILL

WEDDING VENUE

an industrial chic venue located in bloomington, indiana



ONE WORLD AT WOOLERY MILL
2250 West Sunstone Drive
Bloomington, Indiana 47403



EVENT HALL

7,700 square feet

WHERE THE PARTY HAPPENS

This is Woolery Mill. The vastness of this 76,000 square foot limestone mill turned event space is ready to be transformed into the wedding of your dreams. Your exclusive rental of WM allows you to utilize the space however you would like - we encourage you to get creative! We also understand that seamless transitions and overall logistics are both important considerations when planning, so if you are looking for suggestions based on real Woolery Mill weddings - we are always happy to assist.

WM RECOMMENDS THIS SPACE FOR:

Reception

INDOOR SPACE INCLUDES:

- MEZZANINE
- BRIDAL SUITE + GROOM'S LOUNGE
- PRE-FUNCTION SPACE
- COAT CLOSETS
- FULLY AUTOMATIC RESTROOMS
- UV AIR PURIFYING SYSTEM
- OWC'S ONSITE CATERING KITCHEN

CAPACITY

- 520 | Seated Ceremony
- 500 | Seated Reception
- 450 | Seated Reception with Dance Floor
- 520 | Standing Cocktail Reception

WEST PATIO

7,200 square feet

BEST VIEW IN THE HOUSE

The west patio offers dramatic views of the historic limestone working corridor of Woolery Mill in addition to its convenient location nestled up against the indoor event space. This space is just beyond a welcoming green space, showcasing 3 custom fountains.

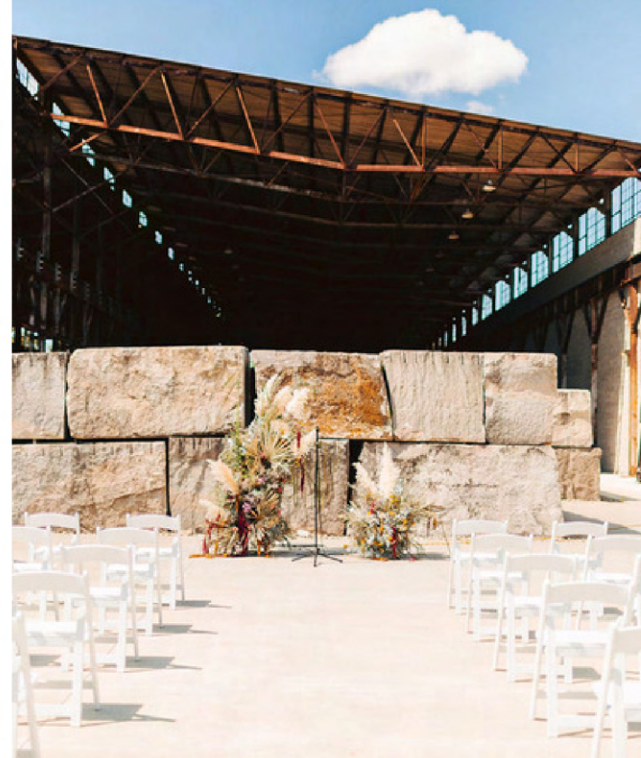
A versatile space, the west patio can be utilized for a number of different elements of your wedding day!

WM RECOMMENDS THIS SPACE FOR:

Ceremony

CAPACITY

- 500 | Seated Ceremony
- 300 | Standing Cocktail Reception
- 180 | Seated Reception
- 150 | Seated Reception with Dance Floor





EAST PATIO

1,800 square feet

AN INTIMATE SETTING

The east patio runs adjacent to the indoor pre-function space and connects both the south and east entrances.

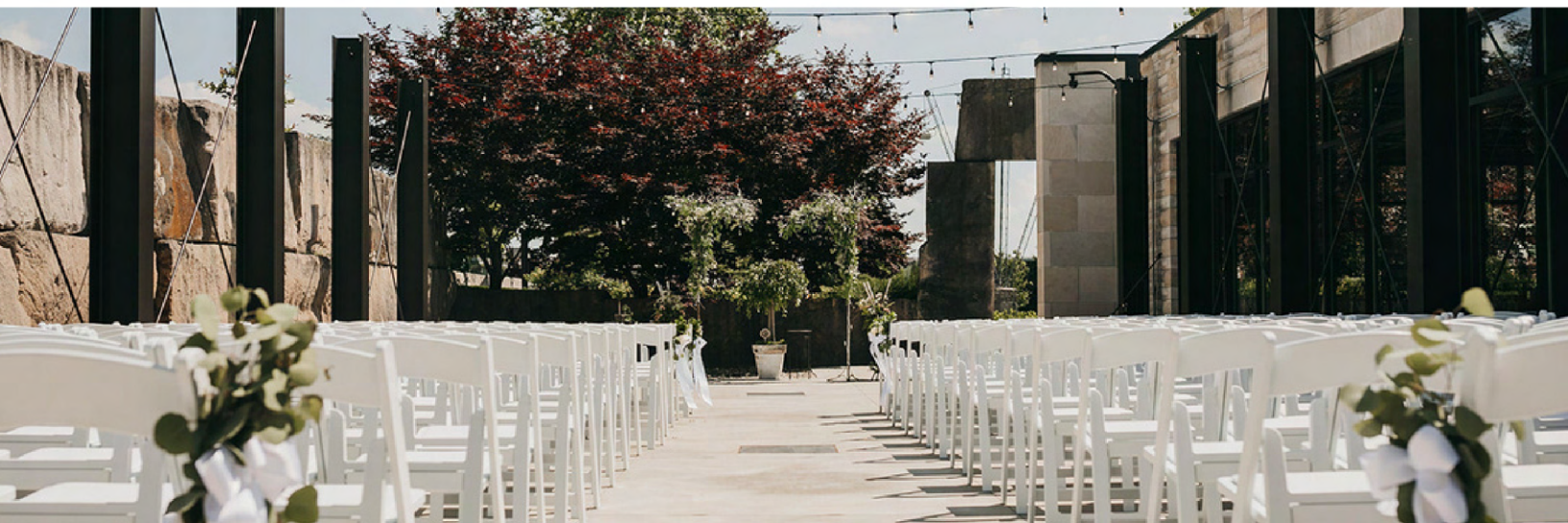
Enter through the stone archway or via the pre-function space just inside, the east patio is sure to prove itself as a perfect cocktail hour or small ceremony location. Not to mention, a favorite photo op spot!

WM RECOMMENDS THIS SPACE FOR:

Cocktail Hour

CAPACITY

- 150 | Seated Ceremony
- 100 | Standing Cocktail Reception
- 80 | Seated Reception





MEZZANINE

700 square feet

ELEVATED EXPERIENCE

The mezzanine is the best built-in bonus space we could have ever dreamt of. This balcony overlooks the indoor event space and houses comfortable leather couches and an incredible amount of natural light.

There are too many uses for WM to just offer one recommendation, so let your imagination wonder to personalize this notable space.

GET INSPIRED:

- FIRST LOOK
- PHOTOS WITH YOUR PHOTOGRAPHER
- MORNING BRUNCH
- PRIVATE VOW READINGS
- SPEECHES + SPECIAL ANNOUNCEMENTS
- TOSS YOUR BOUQUET OR GARTER
- PHOTOBOOTH
- LIVE ENTERTAINMENT
- COZY LOUNGE AREA
- KIDS ZONE
- HEAD TABLE LOCATION
- COCKTAIL HOUR
- ADDITIONAL RECEPTION SEATING



CAPACITY | 50

BRIDAL SUITE

get ready in luxury

A PERK JUST FOR YOU

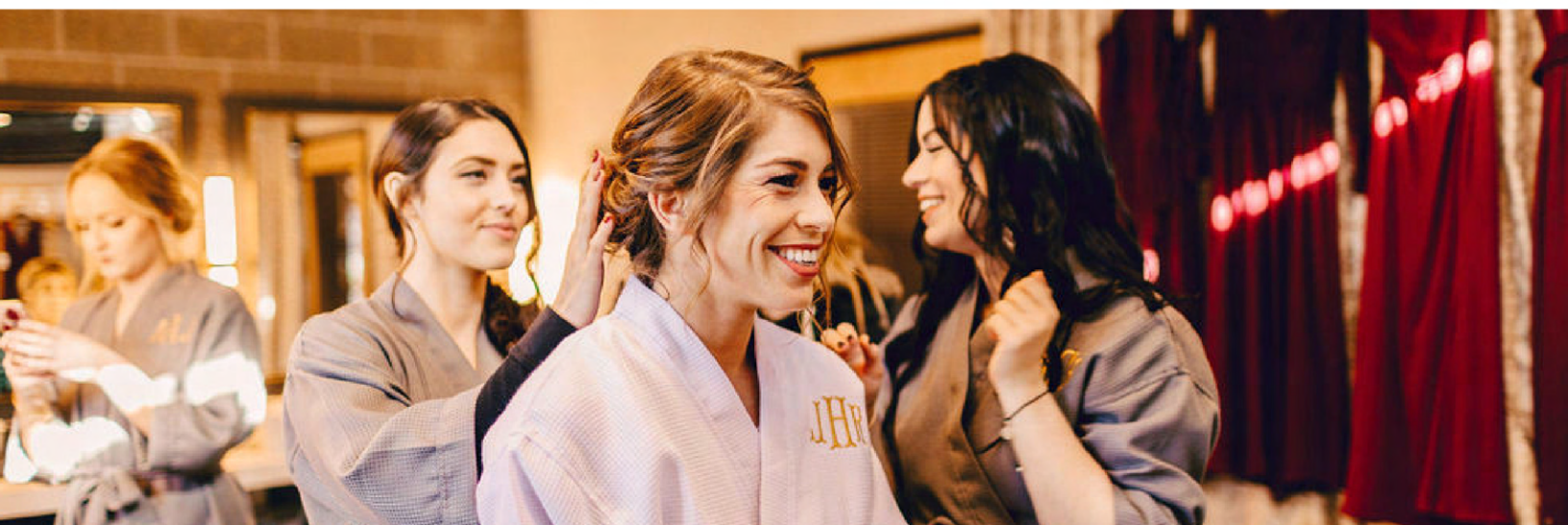
When Woolery Mill was just blueprints and optimistic conversations, we already had you in mind. The bridal suite is a beautiful space to relax and enjoy the day with your bridal party!

Carefully curated, the bridal suite offers comfortable upholstered pieces, a counter with large mirrors and an excessive amount of outlets for all your hair and makeup needs, an ensuite restroom and your own private doors to and from the west patio.

Woolery Mill now offers a groom's lounge too!

DON'T FORGET THE MIMOSAS

All of One World Catering's full open bar packages include a complimentary round of mimosas for you and your bridal party! You can also add this on to your bar package a la carte with your Sales Coordinator.





INCLUSIONS

because convenience matters

VENUE INCLUSIONS:

TABLES

rectangular, round + cocktail

CHAIRS

gunmetal cafe chairs (indoor only)

classic white padded folding chairs (indoor or outdoor)

LINENS + CLOTH NAPKINS

black, white or ivory floor length linens

variety of color options for napkins

PIPE + DRAPE

7ft - 12ft tall with white or black drapes

12ft tall with black duvetyne drapes

SPECIALTY LIGHTING

custom presets, ceiling color washes + disco balls

market style string lights over both patios

HOUSE SOUND SYSTEM

WM asks that all djs and bands use their own systems.



CATERING INCLUSIONS:

CHINA, FLATWARE + GLASSWARE

upgrades available for gold flatware and chargers

CUSTOM MOBILE BARS

use as one large bar or up to three small bars

UPGRADES + ADD ONS:

LINEN + TABLETOP UPGRADES

DANCE FLOORS + RISER STAGES

CEILING DECOR INSTALLS

CHAMPAGNE WALL



FAQ

our most frequently asked questions

VENUE:

DO I HAVE TO SET UP OR TEAR DOWN?

You are responsible for set up and tear down of any personal items or decor you bring into WM (if not handled by other hired vendors). WM takes care of set up, management and tear down of all items provided with the rental, including tables and chairs.

ARE THERE PREFERRED VENDORS?

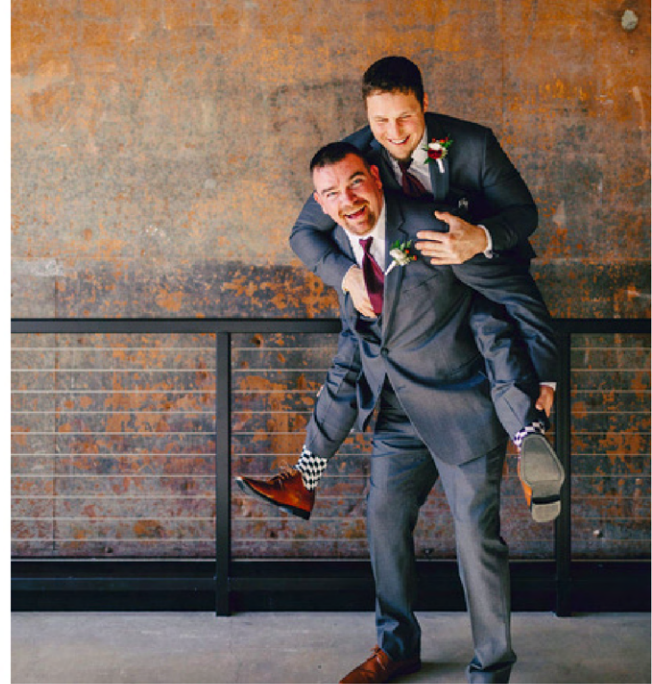
One World Catering is the in-house caterer for the space and offers both food and beverage options, including bar service. WM can also provide you with a list of vendors we work with frequently and recommend. You are also welcome to bring in your own vendors.

IS THERE IS A DAY-OF PERSON?

While there will be a person onsite all day representing WM, this person does not play the same role as a day-of wedding coordinator. WM's Event Producer is there to make sure that all venue details that happen behind the scenes are getting taken care of as well as assisting our in-house catering team as needed.

WILL YOU HOLD MY DATE?

If you would like to secure WM for your preferred wedding date, we require a signed contract and a 25% deposit. All dates are booked on a first come first serve basis. For your convenience, a two week hold may be placed on an available date.





FAQ

... continued

CATERING + BAR:

WHEN DO I NEED TO PICK MY MENU?

OWC recommends having your menu selected at least 3 months out from wedding day or before you send out invitations. If you book WM without catering details, the catering minimum and applicable service charge will be applied to your deposit amount.

WHAT IS THE CATERING MINIMUM?

The catering minimum is \$3,000 for a full space rental.

CAN I BRING IN MY OWN FOOD?

All food must be purchased and provided through OWC, with the exception of dessert or wedding cake and late night snack items. A cake cutting fee applies to all outside wedding cake, excluding cutting cakes. You may bring approved food and beverage items into the bridal lounges or order items through OWC.

DO YOU OFFER BAR SERVICE?

Yes! OWC has a 3-way liquor license and all the proper insurance and permitted bar staff to serve alcohol.

INVESTMENT

Saturday + Holidays

\$8,000

14 HOURS (9:00AM - 11:00PM)

\$500 OFF ALL REMAINING 2024 SATURDAYS + HOLIDAYS

Friday + Sunday

\$6,000

12 HOURS (10:00AM - 10:00PM)

\$400 OFF ALL REMAINING 2024 FRIDAYS + SUNDAYS

IMPORTANT DATES:

BOOKING

Signed Contract +
25% Deposit Due

3 MONTHS OUT

50% of Remaining
Balance Due

2 WEEKS OUT

Final Details +
Remaining Balance Due

No reservation is guaranteed until both a signed contract and 25% deposit are received. Rental fee is subject to 7% tax and does not include catering and bar costs.

FEATURED PHOTOGRAPHY:

Foreground Design Studio | www.foregrounddesignstudio.com

Von Film | www.vonfilm.co

Van Elk & Co | www.jennifervanelk.com



CONTACT US FOR A TOUR!

all tours are booked by appointment only

P | (812) 334-3663

E | WEDDINGS@BLOOMINGTON.COM

Instagram | [@ONELORLDATEWOOLERY](https://www.instagram.com/ONELORLDATEWOOLERY)

Facebook | [ONEWORLDATWOOLERYMILL](https://www.facebook.com/ONEWORLDATWOOLERYMILL)

WWW.ONEWORLDATWOOLERY.COM